

## **+uversa** DIA-SR12 Set-Collar

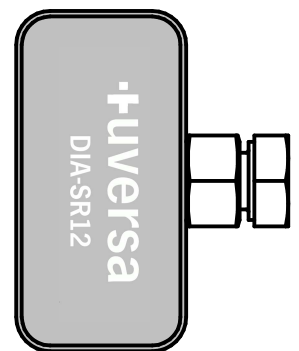
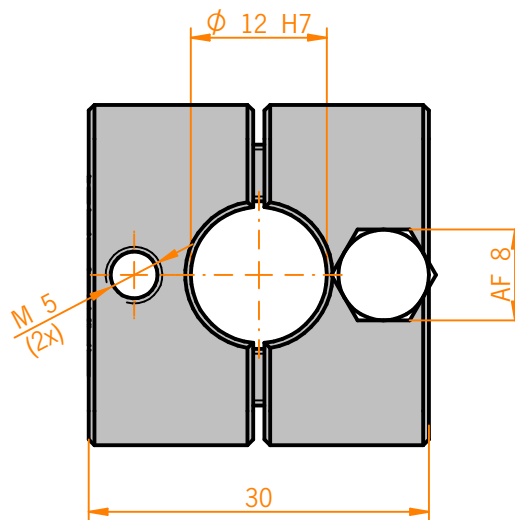
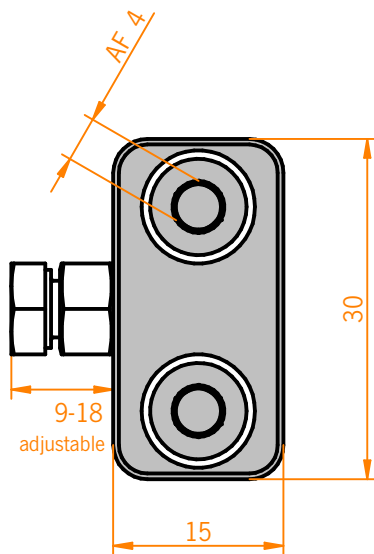


### TECHNICAL DETAILS

<b>Material</b>	Aluminium (milled)
<b>Surface</b>	<div> <span style="color: black;">●</span> black,                      <span style="color: red;">●</span> red,                      <span style="color: blue;">●</span> blue,                      <span style="color: green;">●</span> green,                      <span style="color: yellow;">●</span> gold,                      <span style="color: grey;">●</span> ESD                 </div>
<b>Positional Tolerance</b>	$\pm 0,1 \text{ mm}$
<b>Bores</b>	

### MODULE DESCRIPTION

Accurate set-up of heights, in order to ensure precise attachment of mono or dual modules or other elements to the intended position.



Customized items are available upon request.