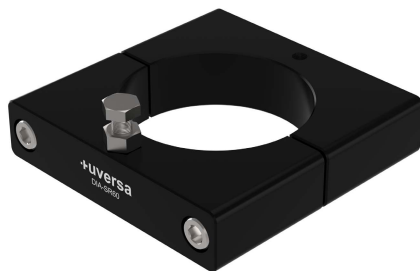


+DIA-SR60 Set-Collar

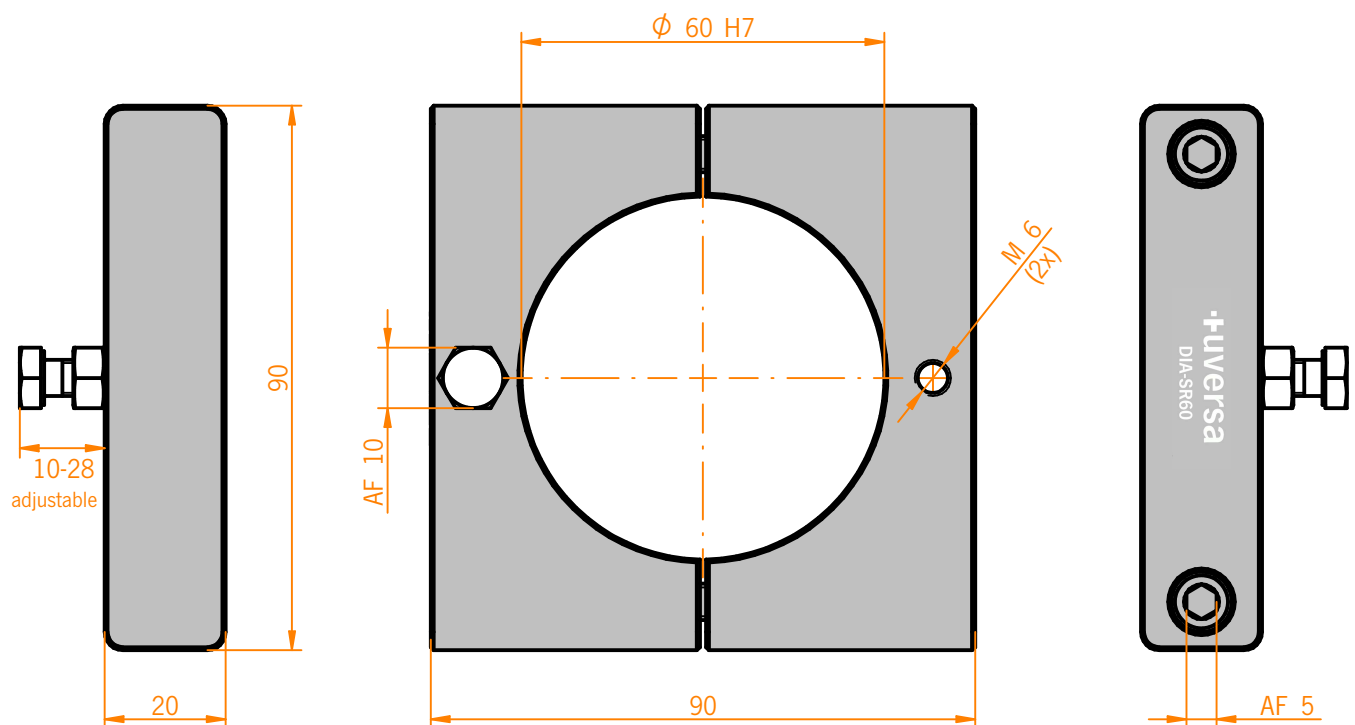


TECHNICAL DETAILS

Material	Aluminium (milled)
Surface	<div> ● black, ● red, ● blue, ● green, ● gold, ● ESD </div>
Positional Tolerance	$\pm 0,01 \text{ mm}$
Fitting Bores	
Positional Tolerance	$\pm 0,1 \text{ mm}$
Bores	

MODULE DESCRIPTION

Accurate set-up of heights, in order to ensure precise attachment of mono or dual modules or other elements to the intended position.



Customized items are available upon request.