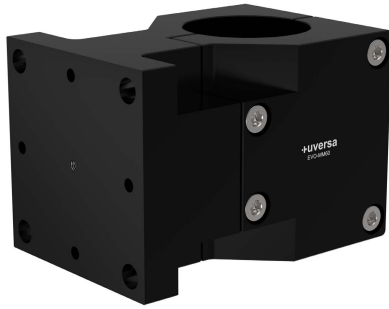


## +EVO-MM60

### Mono-Module

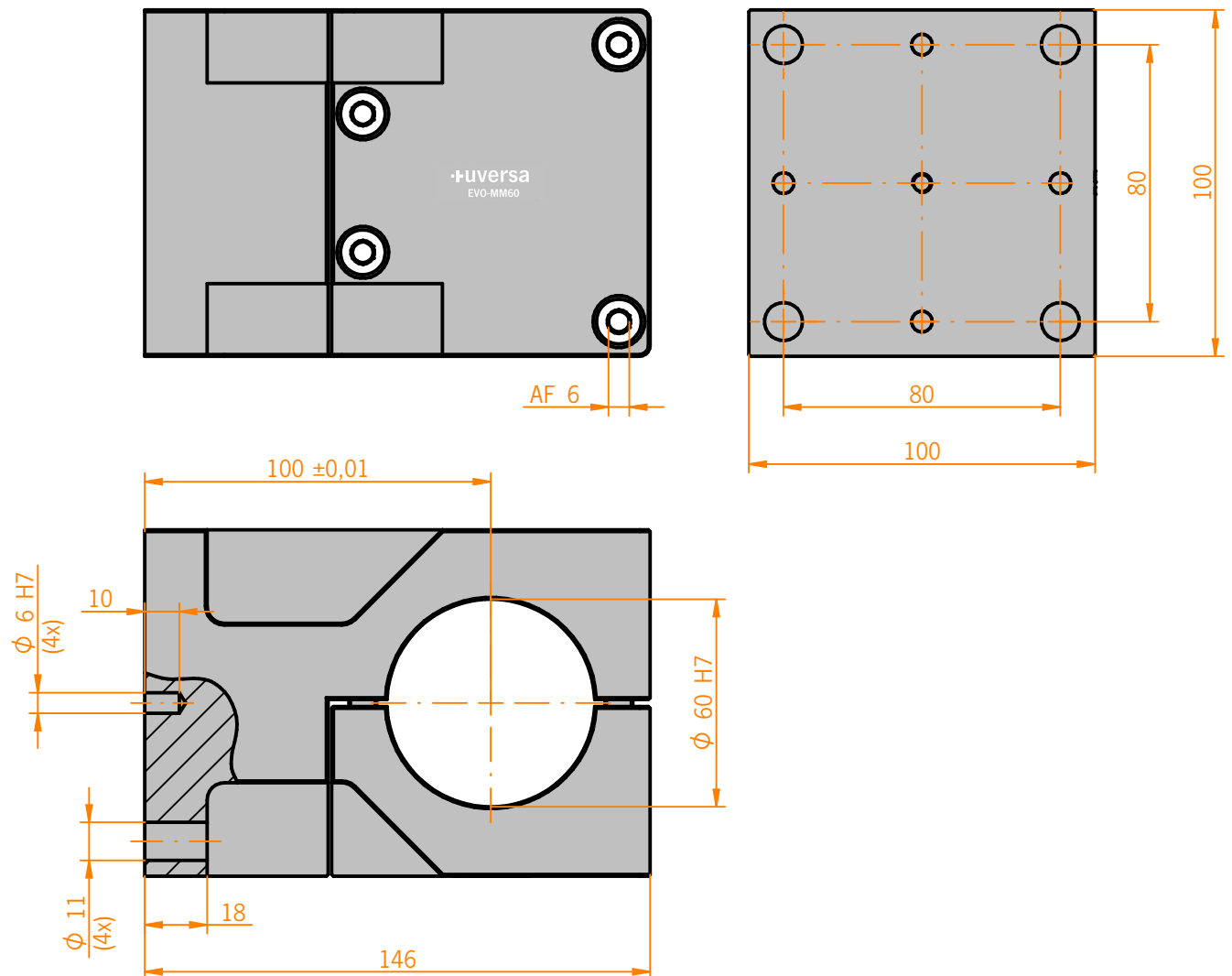


#### TECHNICAL DETAILS

<b>Material</b>	Aluminium (milled)
<b>Surface</b>	<div> <div>●</div> black,           <div>●</div> red,           <div>●</div> blue,           <div>●</div> green,           <div>●</div> gold,           <div>●</div> ESD         </div>
<b>Positional Tolerance Fitting Bores</b>	$\pm 0,01 \text{ mm}$
<b>Positional Tolerance Bores</b>	$\pm 0,1 \text{ mm}$

#### MODULE DESCRIPTION

Module with fitting and mounting bores for precise lateral attachment of components in position. The two-piece structure enables the element quickly to be mounted to a single column system also at a later date.



Customized items are available upon request.