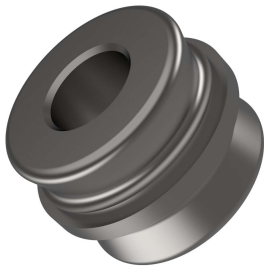


+EVO-MVA20 Multi-Connector-Adapter



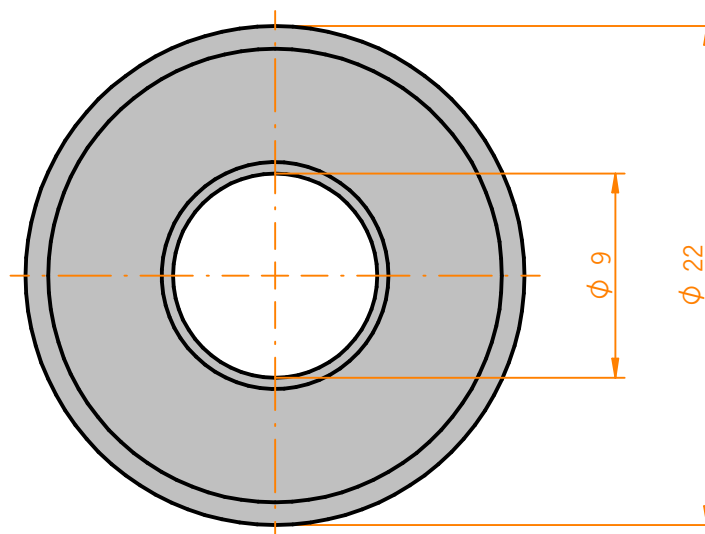
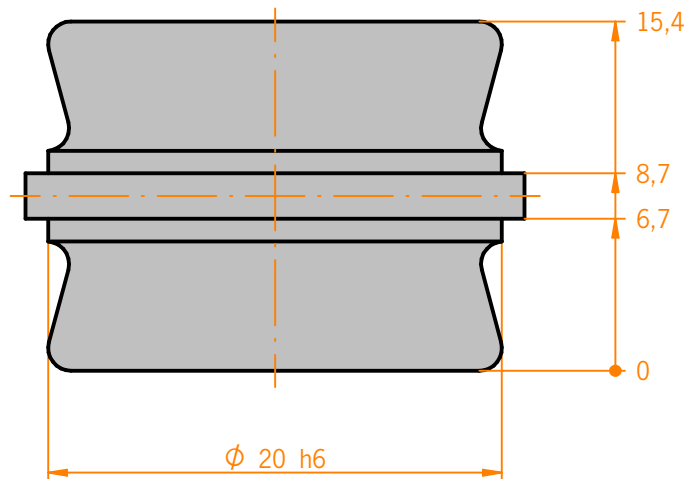
TECHNICAL DETAILS

Material Stainless Steel (1.4305)

Positional Tolerance $\pm 0,1$ mm
Bores

MODULE DESCRIPTION

Option for EVO-MV20.
This item is used as connecting
element for two multiple connectors.



Customized items are available upon request.