

SENO-GH Holder for Forked Light Barriers



TECHNICAL DETAILS

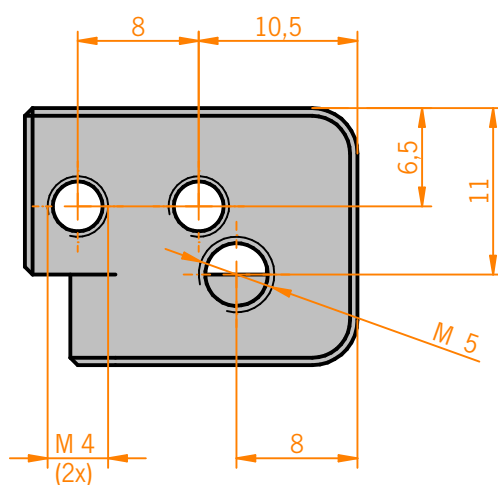
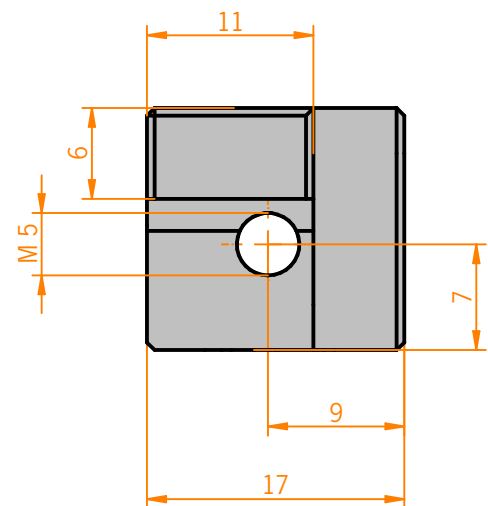
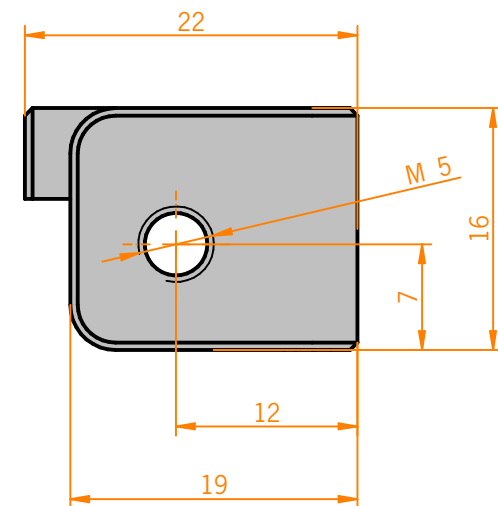
Material Aluminium (milled)

Surface ● black
Anodized

Positional Tolerance $\pm 0,1 \text{ mm}$
Bores

MODULE DESCRIPTION

Safe receptacle for forked light barriers, may be coupled to sensor shafts SENO-SW8 or SENO-SW12 from three sides.



Customized items are available upon request.