

## **+SENO-GS12** Detector Holder Vertical



### TECHNICAL DETAILS

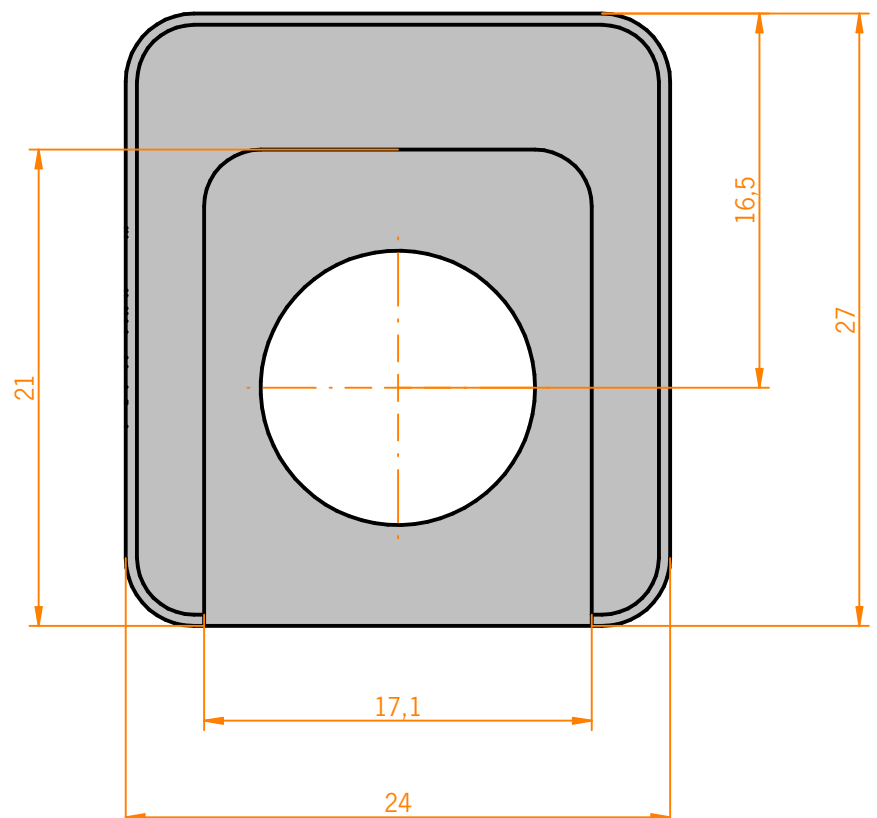
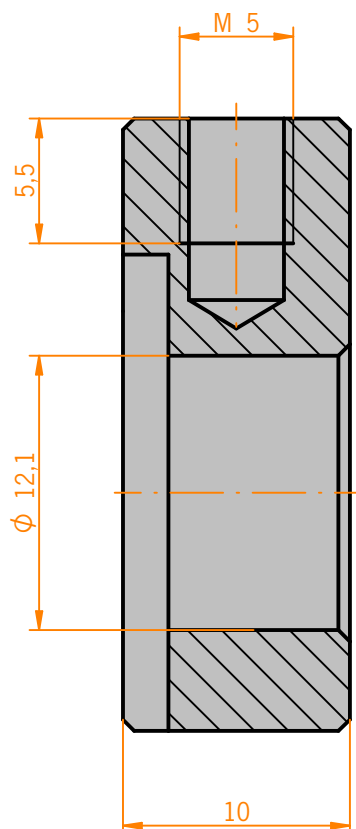
**Material** Aluminium (milled)

**Surface** ● black  
**Anodized**

**Positional Tolerance**  $\pm 0,1$  mm  
**Bores**

### MODULE DESCRIPTION

This module firmly holds in place sensors with a diameter of 8 respectively 12 mm, perpendicularly to sensor shafts SENO-SW8 and SENO-SW12.



Customized items are available upon request.